

RESIDENCE 01

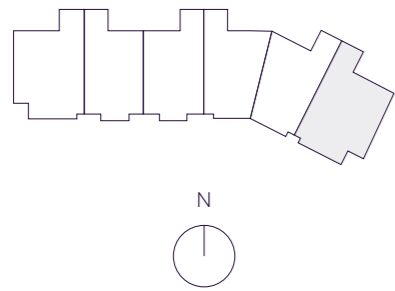
INTERIOR EXTERIOR
 4,980 F² 1,305 F²
 463 M² 122 M²

TOTAL
 6,285 F²
 585 M²

*

- 5 BEDROOMS
- 6 BATHROOMS
- POWDER ROOM
- GREAT ROOM
- SERVICE SUITE

OCEAN VIEW



THE RESIDENCES

SIX FISHER ISLAND

⑥

6 Fisher Island Drive, Fisher Island, FL 33109
 305.873.3852 — 6-fisherisland.com

Douglas Elliman
 Development Marketing

The dimensions stated for this floor plan are approximate because there are various recognized methods for calculating the square footage of a unit. The square footage stated here is calculated from the exterior boundaries of the exterior walls to the centerline of interior demising walls without deductions for cutouts, curves, or architectural features. This method typically results in quoted dimensions greater than the dimensions that would be determined by using other accepted methods. The definition of "Unit" and the calculation method to be relied upon is set forth by the Developer in Developer's prospectus which method may result in a square footage calculation less than the result of the calculation method used here. Dimension and unit configuration is not guaranteed and may change during construction. Depictions of furnishings, fixtures and other items of personal property are not included with purchase. Consult the Developer's prospectus to understand Unit dimensions, to learn what is included with purchase and by payment of regular condominium assessments, and to learn all terms and conditions. 2023 © PRH Parcel 7 Owner, LLC, with all rights reserved.

PRIMARY BEDROOM
 20'-1" x 20'-1"
 BALCONY
 16'-6" x 48'-1"
 BALCONY
 39'-3" x 4'-8"

HER WARDROBE
 14'-1" x 12'-11"

HER BATHROOM
 17'-2" x 13'-11"

GREAT ROOM
 32'-3" x 29'-6"

HIS WARDROBE
 8'-10" x 12'-11"

HIS BATHROOM
 12'-3" x 13'-11"

KITCHEN
 13'-5" x 22'-2"

BEDROOM 2
 17'-6" x 13'-1"

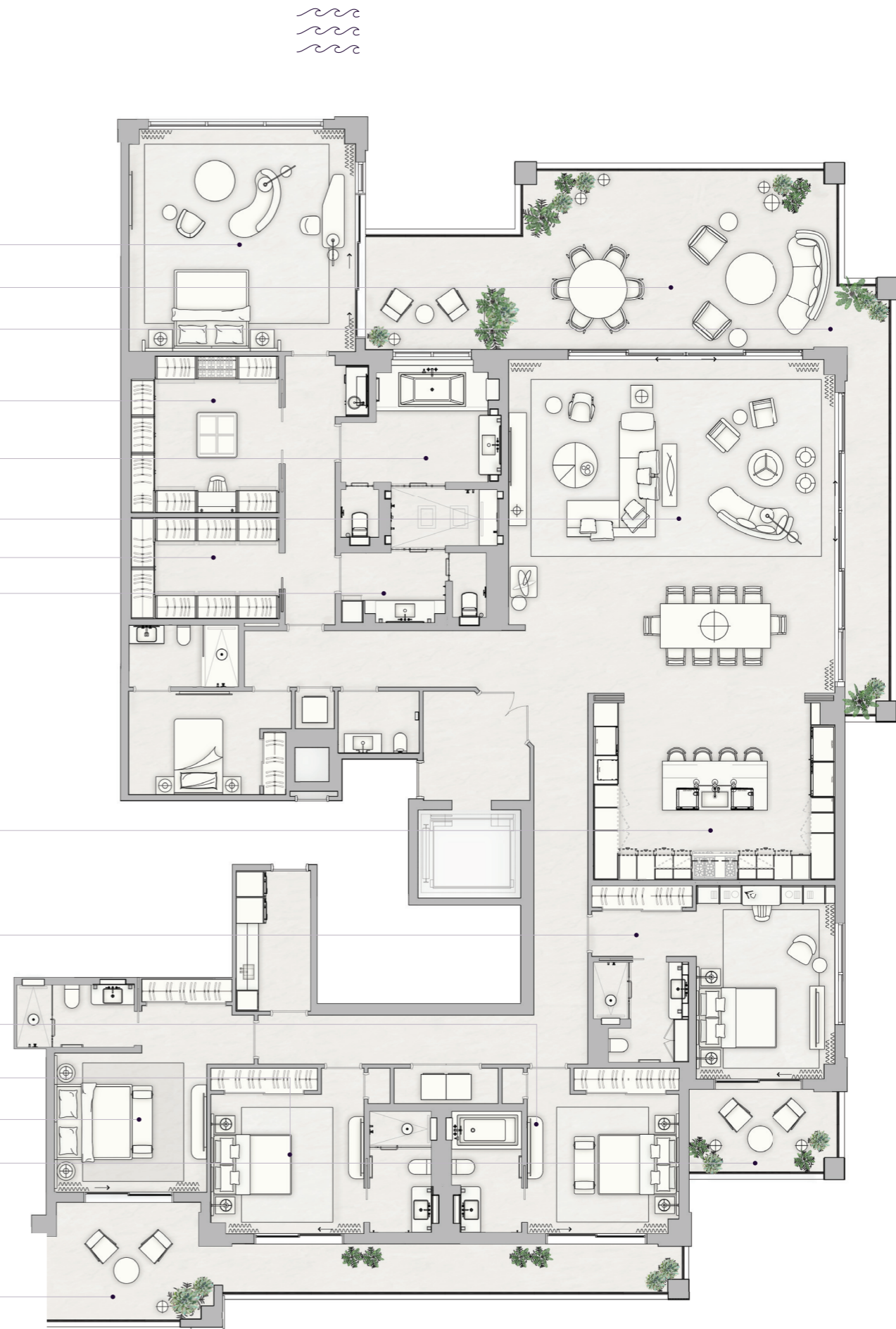
BEDROOM 3
 12'-6" x 14'-6"

BEDROOM 4
 12'-6" x 14'-6"

BEDROOM 5
 12'-7" x 13'-6"

BALCONY
 14' x 8'

BALCONY
 58'-2" x 11'-1"



N 25° 45.8255



W 80° 8.4428