

RESIDENCE 06

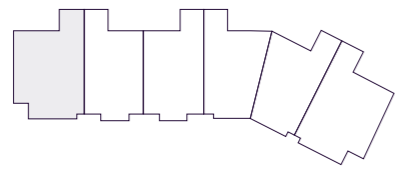
INTERIOR EXTERIOR
 5,058 F² 1,943 F²
 470 M² 181 M²

TOTAL
 7,001 F²
 651 M²

*

- 4 BEDROOMS
- 5 BATHROOMS
- POWDER ROOM
- FAMILY ROOM
- WINDOWED SERVICE SUITE
- LIVING ROOM

OCEAN VIEW



THE RESIDENCES
 SIX FISHER ISLAND

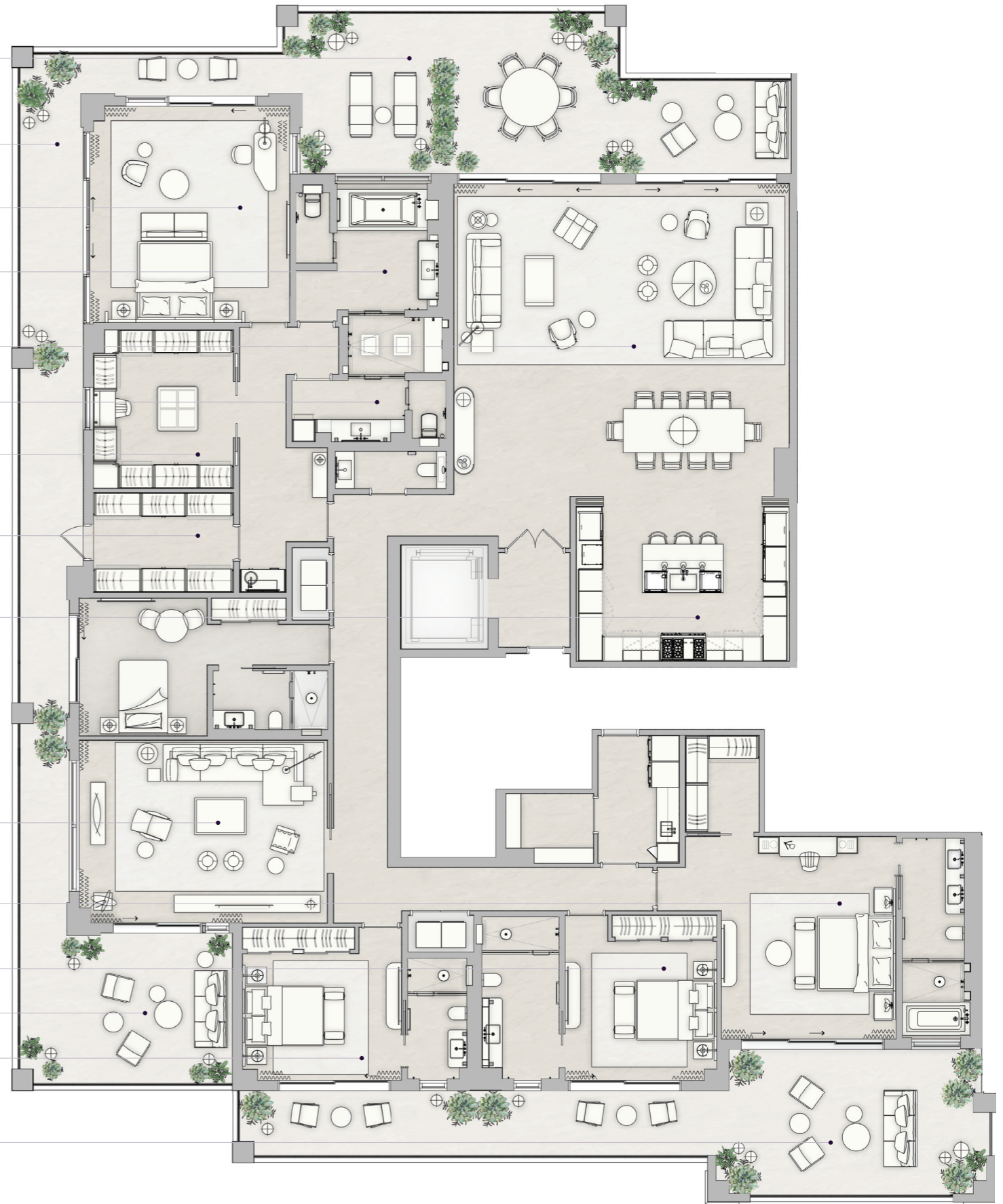
⑥

6 Fisher Island Drive, Fisher Island, FL 33109
 305.873.3852 — 6-fisherisland.com

Douglas Elliman
 Development Marketing

The dimensions stated for this floor plan are approximate because there are various recognized methods for calculating the square footage of a unit. The square footage stated here is calculated from the exterior boundaries of the exterior walls to the centerline of interior demising walls without deductions for cutouts, curves, or architectural features. This method typically results in quoted dimensions greater than the dimensions that would be determined by using other accepted methods. The definition of "Unit" and the calculation method to be relied upon is set forth by the Developer in Developer's prospectus which method may result in a square footage calculation less than the result of the calculation method used here. Dimension and unit configuration is not guaranteed and may change during construction. Depictions of furnishings, fixtures and other items of personal property are not included with purchase. Consult the Developer's prospectus to understand Unit dimensions, to learn what is included with purchase and by payment of regular condominium assessments, and to learn all terms and conditions. 2023 © PRH Parcel 7 Owner, LLC, with all rights reserved.

- BALCONY
69'-5" x 5'-3"
- BALCONY
93'-4" x 6'-4"
- PRIMARY BEDROOM
20'-3" x 17'-7"
- HER BATHROOM
17'-1" x 13'-3"
- LIVING ROOM
29'-2" x 30'-6"
- HIS BATHROOM
12'-1" x 13'-3"
- HER WARDROBE
14'-1" x 12'-5"
- HIS WARDROBE
8'-10" x 12'-5"
- KITCHEN
13'-6" x 19'-6"
- FAMILY ROOM
17'-2" x 22'-4"
- BEDROOM 2
18'-3" x 15'
- BEDROOM 3
12'-6" x 14'
- BALCONY
19'-7" x 14'
- BEDROOM 4
11'-1" x 14'-8"
- BALCONY
67'-5" x 13'-8"



N 25° 45.8255



W 80° 8.4428