

# RESIDENCE 301

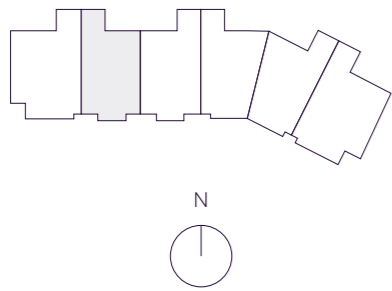
INTERIOR	EXTERIOR
4,980 F <sup>2</sup>	2,070 F <sup>2</sup>
463 M <sup>2</sup>	192 M <sup>2</sup>

TOTAL  
7,050 F<sup>2</sup>  
655 M<sup>2</sup>

\*

- 4 BEDROOMS
- 5 BATHROOMS
- 2 POWDER ROOMS
- PRIVATE POOL DECK
- SUMMER KITCHEN
- FAMILY ROOM
- SERVICE SUITE
- LIVING ROOM

OCEAN VIEW



## THE RESIDENCES

SIX FISHER ISLAND

⑥

6 Fisher Island Drive, Fisher Island, FL 33109  
305.873.3852 — 6-fisherisland.com

**Douglas Elliman**  
Development Marketing

The dimensions stated for this floor plan are approximate because there are various recognized methods for calculating the square footage of a unit. The square footage stated here is calculated from the exterior boundaries of the exterior walls to the centerline of interior demising walls without deductions for cutouts, curves, or architectural features. This method typically results in quoted dimensions greater than the dimensions that would be determined by using other accepted methods. The definition of "Unit" and the calculation method to be relied upon is set forth by the Developer in Developer's prospectus which method may result in a square footage calculation less than the result of the calculation method used here. Dimension and unit configuration is not guaranteed and may change during construction. Depictions of furnishings, fixtures and other items of personal property are not included with purchase. Consult the Developer's prospectus to understand Unit dimensions, to learn what is included with purchase and by payment of regular condominium assessments, and to learn all terms and conditions. 2023 © PRH Parcel 7 Owner, LLC, with all rights reserved.

PRIMARY BEDROOM  
20' x 19'-8"

BALCONY  
48'-4" x 16'-1"

HER WARDROBE  
12'-9" x 14'

HER BATHROOM  
13'-11" x 11'

LIVING ROOM  
29'-6" x 17'-8"

HIS BATHROOM  
12'-3" x 8'-10"

HIS WARDROBE  
14'-10" x 19'-8"

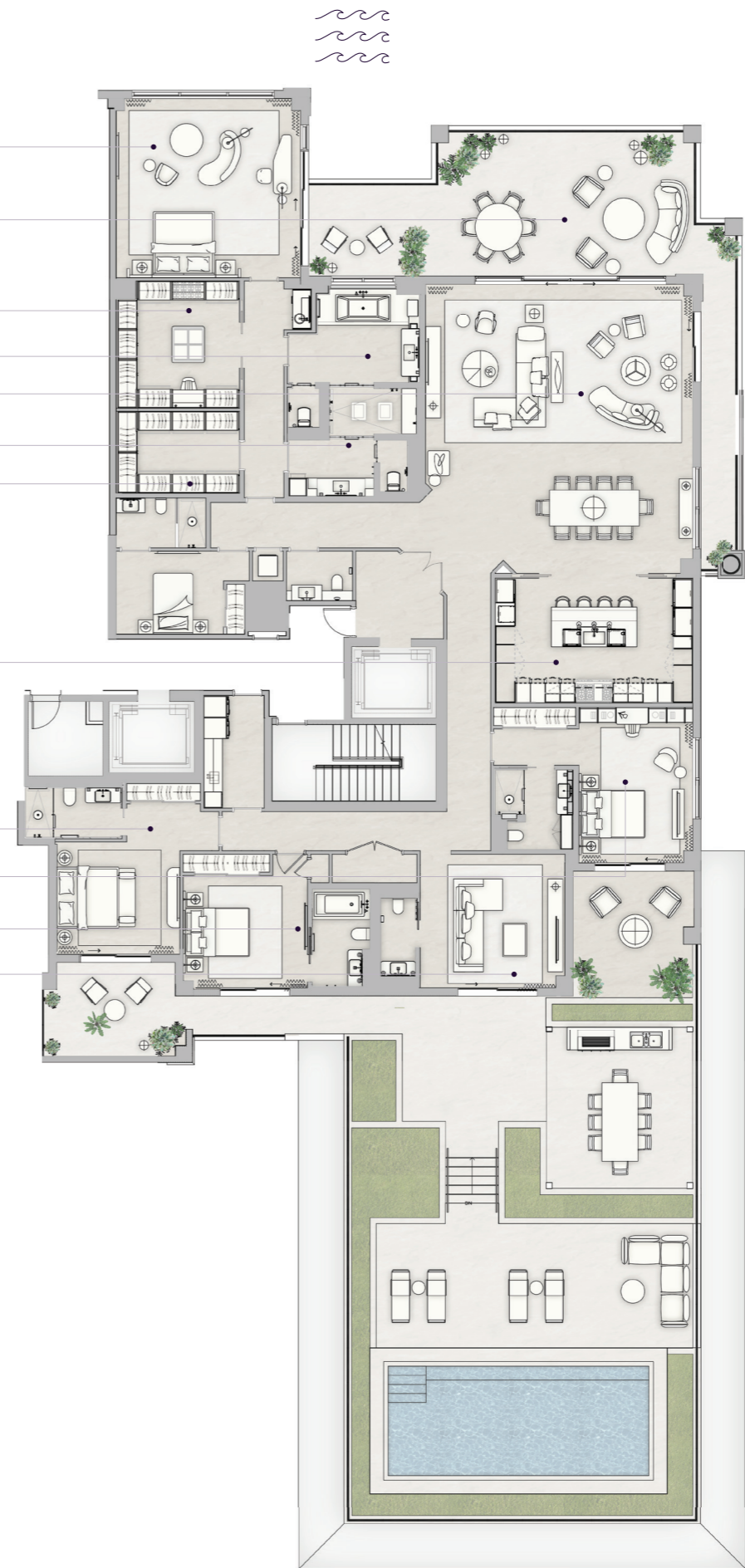
KITCHEN  
22' x 13'-5"

BEDROOM 2  
13'-6" x 12'-4"

BEDROOM 3  
16'-3" x 14'-8"

BEDROOM 4  
13' x 15'-9"

FAMILY ROOM  
16'-11" x 15'-6"



N 25° 45.8255



W 80° 8.4428